



Invitation to Exhibit at 'Iolani Gallery

WAG has been invited to mount an exhibition early in the new year at Gallery 'Iolani at Windward Community College. This is an extraordinary opportunity to show your best work in this large and gorgeous facility, one of the finest exhibition sites in Hawaii. We just got the exact dates and it's going to be a tight turn-around with intake on January 19. Look for the prospectus with details shortly.

WAG members Wendy Roberts and Kelley Fitzgerald were recently included in an exhibition of 30 Hawaii artists. *HomeGrown* was described by Gallery Director Toni Martin as ushering in a new exciting movement showing works of fantasy, color, bold and bright images not seen in such abundance during the past few decades.

Do you recognize Roger and Barbara Tinius and Wendy in her Halloween costume at the reception on Oct. 29?



Time to Renew Your Membership

Now is the time to renew your annual membership (January - December). In addition to opportunities to exhibit, membership also supports art education, community projects, and is a great way to meet and interact with other artists.

The cost of membership has not changed in many years and it is still \$30 per year beginning in January of each year. Students join for \$15 per year. Here's the link: <http://windwardartistsguild.org/joinrenew> where you can join online or by snail mail and check as per instructions on the page.

Art Education

The successful **Connect and Create Through Art** collaboration with Adventist Health Castle's Wellness Program concluded in December. Thanks to the efforts of WAG lead Eileen Towata and Tracie Ann Tjapkes at Adventist Health Castle, and teachers Denise Karabinus, Tamara Moan and Dawn Yoshimura, Zoom art classes were offered to the general public that were geared to appeal to people with no art experience and required no special supplies. These fun art explorations also appealed to more experienced artists.

In addition to helping people tap into their creativity, the program connected some local folks with old friends on the mainland who took classes together, helped some of the AHC tobacco cessation program participants find enjoyment and relaxation in artistic endeavors, provided teaching opportunities for artists who were deprived of their normal outlets by the pandemic, and in this last quarter reached out to the next generation of artists through making classes available to high school students.

Windward Artists Guild Newsletter

Recap of a Busy Fall/Winter Art Season



It has been a busy, exciting time for WAG artists in recent months. The **61st Annual WAG Member Show** opened online on November 5. Thirty-one artists submitted 113 2D and 3D artworks that can be seen at

<https://2021.windwardartistsguild.org/>.

We had a Zoom reception on November 18, when we saw the exhibit together in a slideshow, voted for the People's Choice award, and shared our latest art projects.



The People's Choice:
Randall Pong's **Koi 4**

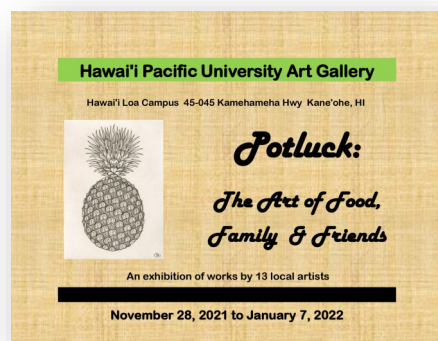
WAG artists could also be found in other recent shows:

The **Association of Hawaii Artists' 2021 Contemporary Show** was at the Honolulu Country Club from November 7 - December 19, including paintings by Jennifer Aki, Liz Corbin, David Friedman, Marina Levy, MaryAnne Long, Frank Oliva, Wendy Roberts, Young-Hee Sweet (1st Place for *Fish II*), Barbara Tinus, Roger Tinus, Frances Wong, and Mikyung Yee.

Young-Hee Sweet's ***Fish II***



The **Matchbox Plus XVII Miniature Art show** is at the Cedar Street Gallery until January 8 with art by Suzanne Barnes, Lynne Boyer, Edward Brennan, Spencer Chang, David Friedman, MaryAnne Long, Faye Maeshiro, Yvonne Manipon, Esperance Rakotonirina, Warren Stenberg, Jimmy Tablante, Wayne Takazano, and Dawn Yoshimura.



Potluck: The Art of Food, Family and Friends will be at the Hawai'i Pacific University Art Gallery in Kaneohe until January 7. The 13 participating artists includes Suzanne Barnes, Liz Corbin, Aileen Feldman, Suzanne McCrary, Eileen Towata, and Dawn Yoshimura.

Jimmy Tablante, Jenee Wonderlich, and Dawn Yoshimura recently had paintings hanging in the **Art at the Atrium** show at Na Lama Kukui Lifestyle and Design Center on Nimitz Highway.

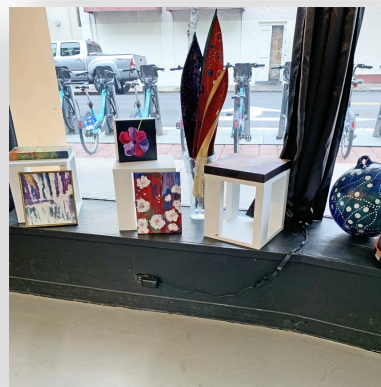
Marti Wiese Rounds' art will be on display at the **Assaggio Restaurant** in Kailua until March.

Windward Artists Guild Newsletter

The ARTS at Marks Gallery hosted three different shows in December:

First up was the **WAG Mini Miniature Show**, December 2 - 8, including over 70 pieces of 2D and 3D art from 19 members. In addition to the Show art, original art, prints, ornaments, cards, ceramics and other gift items were available on Pop-Up Sale tables. Unlike a regular exhibit, customers could take their purchases with them, making it easy to shop for holiday gifts.

In spite of a rainy Sunday and losing a day because the power was out due to flooding in Chinatown, there were 16 sales of Show art and nearly 100 items were sold from the Pop-Up Sale tables.



WAG NEWS

Windward Artists Guild Newsletter



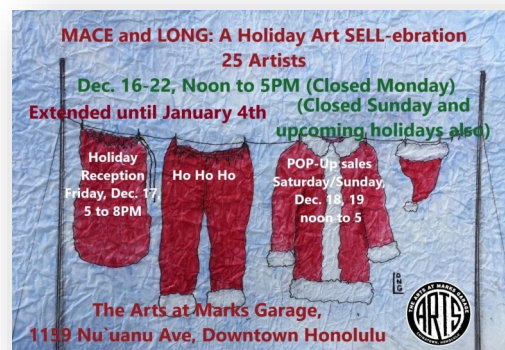
During the second week, December 9 - 15, the Association of Hawaii Artists sponsored **The Present - In Miniature**. Like the WAG show, the art on the walls and the Pop-Up Sale items could be taken immediately by the customer.

WAG artists who are also AHA members included Liz Corbin, Carol D'Angelo, Dexter Doi, Frank Oliva, Wendy Roberts, Frances Wong and Mikyung Yee.

The final show is **MACE and LONG: A Holiday Art SELL-ebration**.

This show is an eclectic mix of media and styles featuring the art of young emerging artists showing great promise. This experience in participating in a show, perhaps for the first time, is enhanced by the inclusion of artists that are further along their career path and can serve as mentors.

Originally scheduled for one week, this successful show was extended to January 4.



Art Classes Available

Registration is open for next year's art classes in the **Palama Settlement Art Program**. Dawn Yoshimura will be teaching 4 classes: Beginning Watercolor, Intermediate-Continuing Watercolor, Beginning Drawing and Advanced Watercolor.

The plan is to begin 2022 back on campus after 2 years online. To be as inclusive and safe as possible, it will be a hybrid class: Dawn will be at Palama broadcasting live on Zoom and those who call in can do the entire class online. For those who wish to return in person, a space will be saved for them. Social distancing and other safety measures will be observed.

There is a one time \$25 registration fee, and \$30 for each art class but you can also take any of the free classes during this semester including chair yoga, etc.

Student Art:



Senior Online Registration: <https://forms.gle/mptBwPWYya29RBJp6>

Covid Commitment Letter: <https://forms.gle/vXrZoNDyHL2zQ8pP6>

Contact: Carl Pi'i Minns, Recreation Director, (808) 848-2503